

## PERFORMANCE

### Display Size

21.5"

### View Area

476.1x267.8 mm

### Panel

In-Plane Switching

### Backlight

WLED

### Aspect Ratio

16:9

### Resolution

1920x1080

### Pixel Pitch

0.248x0.248 mm

### Dot / Pixel Per Inch

102 DPI

### View Angle (H / V)

178° / 178°

### Response Time

4ms (Extreme mode) / 6ms (Normal mode) / 14ms (Off mode)

### Color Support

16.7 Million

### Refresh Rate

75Hz

### Brightness

250 cd/m<sup>2</sup>

### Contrast Ratio

1000:1

### Color Gamut

99% sRGB

### Screen Surface Treatment

Anti-glare

### Curvature

Flat Panel

### Camera

None

### Microphone

None

### Speakers

2Wx2

### Power Consumption (Typical / Maximum)

11W / 27W

### Power Adapter

Integrated

### Touchscreen

None

### Smart System

None

## DESIGN

### Stand

Tilt, Swivel, Pivot, Height Adjust Stand

### Case Color

Raven Black

### Side Bezel Width

1.8 mm

### Mounting

Supports VESA mount 100 x 100 mm

### ThinkCentre® M Series Support

Tiny, Nano Support

### Dimensions (WxDxH)

- Lowest Position | 488.9 x 178.6 x 315.3 mm (19.25 x 7.03 x 12.41 inches)
- Highest Position | 488.9 x 178.6 x 470.3 mm (19.25 x 7.03 x 18.52 inches)
- Head Only | 488.9 x 46 x 295.1 mm (19.25 x 1.81 x 11.62 inches)

### Packaging Dimensions (WxDxH)

570 x 131 x 358 mm (22.44 x 5.16 x 14.09 inches)

### Weight

- Monitor With Stand | 4.3 kg (9.4 lbs)
- Monitor Head Only | 2.7 kg (6.0 lbs)

### Packaging Weight

6.1 kg (13.4 lbs)

## CONNECTIVITY

### USB Port

None

### Video Connector

1x HDMI® 1.4, 1x DP 1.2, 1x VGA

### Network Connectivity

None

## SERVICE

### Base Warranty

3-year

## CERTIFICATIONS

### Environmental Certification

ENERGY STAR® Certified, TCO 9.0, TCO Edge 2.0, EPEAT™ Gold, RoHS, EU Energy Efficiency Level (Level-C)

### Ergonomic Certification

Eyesafe® Display 2.0, TÜV Low Blue Light (Hardware solution), TÜV Rheinland® Low Blue Light, TÜV Rheinland® Flicker Free, TÜV Rheinland® Eye Comfort

### Sync Technology

None

### Special Features

Natural Low Blue Light

## SOFTWARE

### Operating System

Support Windows® 10, Windows® 11

## ACCESSORIES

### Video Cables

HDMI® Cable

## MODEL

Announce Date

: 2023-10-17

EAN /

UPC / : 0197528712277 / 197528712277 / None

JAN



Product image is a sample, it may not match the real color of this model

## Premium Care - Advanced Support from Real People. Real Fast.



### REAL PERSON

Choose how you want to reach us - through the phone, chat or email - our expert technicians will take care of you.



### REAL FAST

Highly trained technicians will provide you real-time solutions, whatever the issue, on your first contact. If needed, our team will schedule an onsite visit for the next business day.



### HASSLE FREE

'Getting started' and 'how-to' assistance for hardware and software. Easy solutions that are simple to reach - that's how Premium Care delivers you the ideal support experience.



### PC HEALTH CHECK

Free annual PC Health Check that allows our experts to spot issues before you do so they can resolve them quickly and help you avoid PC problems.

## Accidental Damage Protection - Protection of your PC from the unexpected.

Experience shows that a significant portion of devices may be damaged (and not covered under warranty) in the first three years. Lenovo's Accidental Damage Protection service covers accidents beyond the system warranty such as drops, spills, bumps and even electrical surges. Make sure your new device has maximum protection, avoid unplanned costs and get peace of mind.

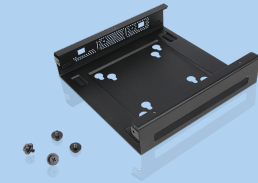
## Base Warranty – Included with the systems you purchase, default 1- or 3-year coverage window.

## Warranty Extensions & Upgrades – Service and protection that's right for your circumstances.

- Pick Up & Return Courier
- Onsite Support
- Technician Installed Customer
- Replaceable Unit Service
- International Warranty Upgrade

Lenovo may not offer the products, services or features discussed in this document in all regions. Lenovo may withdraw an offering at any time. Consult your local representative for information on offerings available in your area. Lenovo reserves the right to change specifications or other product information without notice. Lenovo is not responsible for photographic or typographical errors. Lenovo provides this publication "as is" without warranty of any kind, either express or implied, including the implied warranties of merchantability or fitness for a particular purpose.

## Recommended Accessories



### ThinkCentre Tiny VESA Mount II

4XFON03161

The ThinkCentre Tiny VESA Mount II is a unique design specific to house the Tiny PC while featuring the universal VESA mount configuration. The VESA standard enables this mount to attach to anything that is VESA comp...



### Lenovo USB-C Cable 1m

4X90U90619

The Lenovo USB-C Cable 1m makes it easy to connect your USB-C notebook with other USB-C accessories and displays. It supports 10Gbps data rate, 20V/3A 60W power, and can be used with USB-C Docks, USB-C monitors with 4...

For a full list of accessories and services, please visit:  
<https://smartfind.Lenovo.com>

Lenovo

PSREF  
Product Specifications  
Reference